

# Feb 2, 2011

## AGENDA

- Schedule
- Methodology
- Overview of Sunnyvale General Plan
- LUTE Goal Structure
- Regional Planning Presentation
- Committee Discussion and Direction

# SCHEDULE

## (Agenda Item 2)

- Next 5 months
- General ordering of events
- No schedule slippage

# Action

- Approve revised schedule

# POLICY DEVELOPMENT METHODOLOGY (Agenda Item 3)

- Draft policies prior to meeting
- Training topics
- Committee discussion
- Volunteer following week
- Staff revises policies
- Consensus at next meeting
- All LUTE policies reviewed June 2011

# Action

- Accept methodology

# GENERAL PLAN OVERVIEW (Agenda Item 4)



# WHAT IS A GENERAL PLAN?

- Comprehensive set of long term goals and policies for the physical development of the city
- Foundation for local government decision-making
- Facilitates citizen participation

# STATE MANDATED GP TOPICS

- Land Use
- Circulation (transportation & utilities)
- Housing
- Conservation
- Open Space
- Noise
- Safety

# SUNNYVALE COMMUNITY VISION

- Guiding Framework for General Planning
- Adopted in 2007 after extensive community outreach and participation

# SUNNYVALE COMMUNITY VISION

## (Previously Covered)

### ASPIRATIONS

- A strong diverse community
- A community with a vibrant and innovative local economy
- A regional leader in environmental sustainability
- A safe, secure and healthy place for all people
- A city managed by a responsible and responsive government
- A community with a distinctive identity



# GENERAL PLAN CONSOLIDATION (Previously Covered)



To



# GENERAL PLAN CONSOLIDATION

- New structure and format of General Plan
- User friendly (web based)
- Focus on physical development
- No new policies

# NEW GP CHAPTERS

- Vision
- Land Use and Transportation
- Community Character
- Housing and Economy
- Safety and Health
- Environmental Management

# GENERAL PLAN ORGANIZATION

- Goals
- Policies
- Actions

*- Implementation Efforts*

# GENERAL PLAN GOALS

- Long-range, broad and comprehensive target
- Not necessarily measurable or achievable
- A Desired end-state community condition

# GENERAL PLAN POLICIES

- Focused and specific instructional guidelines
- Describe context and rationale of desired outcomes
- Created, altered or discarded only by City Council

# GENERAL PLAN ACTIONS

- Specific, proactive steps to achieve goals following instructional guidelines
- Short-range in nature
- Critical link between long-range planning and current decision-making

# IMPLEMENTATION EFFORTS

## EXAMPLES

- Adopted Codes
- Specific Plans
- Design Guidelines
- Other operational efforts

# LUTE GOAL STRUCTURE (Agenda Item 5)



# LAND USE & TRANSPORTATION ELEMENT (LUTE)

- Two documents from 1985 to 1997
- Recognizes that issues are inter-related and affect each other
- Both significantly contribute to the character of Sunnyvale

# LUTE GOAL STRUCTURE

- A. Coordinated Regional Planning
- B. Options for Healthy Living (& Open Space)
- C. Transportation: Effective Multi-Modal System
- D. Strong Diverse Economy
- E. Variety of Housing
- F. Protected and Enhanced Neighborhoods
- G. Environmental Sustainability
- H. Maintained & Enhance City Appearance
- I. Special/Unique Land Uses

# Action

- Provide feedback
- Confirm working structure for Goals

# GOAL: COORDINATED REGIONAL & LOCAL PLANNING

## Agenda Item #6



# EDUCATION/TRAINING

- Previously covered

## NEW TOPICS

- Regional Participation
- Bordering Cities
- Regional Infrastructure
- Environmental Protection
- Adaptation

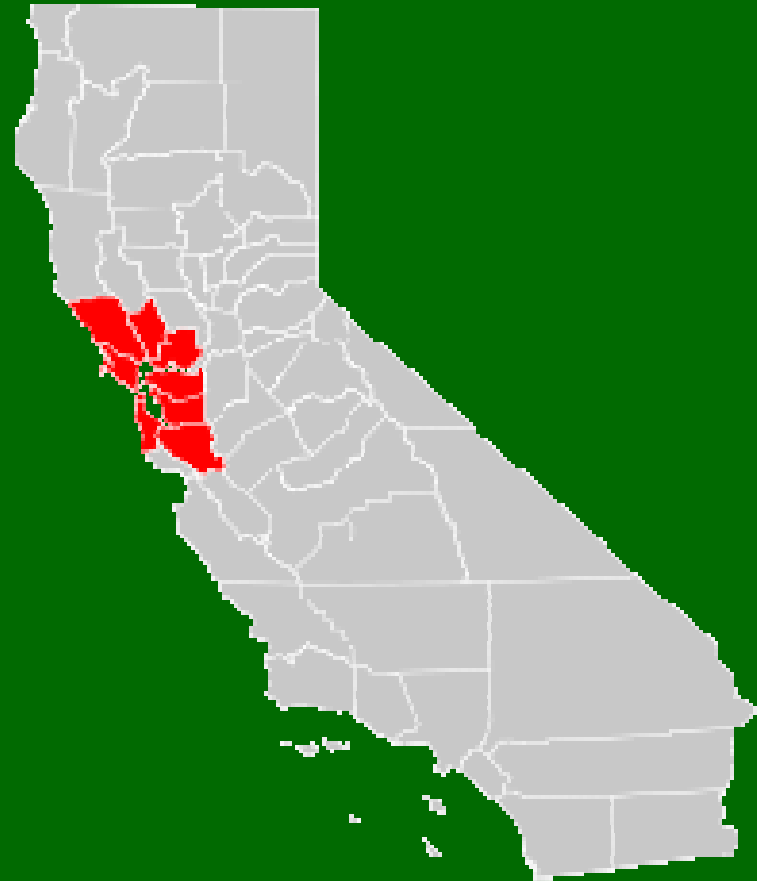
# PURPOSE

- To protect the quality of life, the natural environment and property investment, preserve home rule, secure fair share of funding and provide leadership in the region.

# REGIONAL PARTICIPATION

# SF Bay Area Region (Previously Covered)

- Nine Counties
- Regional Agencies
  - ABAG
  - SCVWD
  - RWQCB
  - VTA
  - MTC
  - BAAQMD
- Integrated Planning
  - Land Use
  - Transportation
  - Air Quality
  - Water Supply/Quality
  - Open Space



# SUNNYVALE'S SETTING

- Defined edges to the city (no sprawl)
- SF Bay is north edge
- Flat land
- Absence of known earthquake faults
- Full range of Land Uses
- 4 Freeways & 2 Expressways
- E/W El Camino Real & Railroad

# REGIONAL PARTICIPATION

- Federal Agencies
- State Agencies
- Role of regional agencies
  - ABAG, MTC, VTA, SCVWD, RWQCB etc
- Regional efforts - One Bay Area (SCS)
- Non-government organizations

# HOW DO WE PARTICIPATE?

- Directly
  - Attend Hearings Voice Opinion
  - Join Committees
- Indirectly
  - Write Letters
  - Support or Oppose Legislation
  - Respond to notices and referral
- Take a Position on Ballot Measures
- Receive Tax Dollars
- Pay Fees

# PARTICIPATION EXAMPLE

# SENATE BILL 375 (Previously Covered)

- Uses regional transportation planning process to achieve reductions in GHG emissions
- Consistent with AB32
- Coordinates the RHNA process with the RTP and the SCS
- Maintains local authority over land use decisions

# ADDRESSING GHG REGIONALLY

- CA's 3-Pronged Approach to transportation GHG emissions:
  - Cleaner Vehicles
  - Cleaner Fuels
  - More sustainable communities (SB375)
- ABAG/MTC - One Bay Area/SCS
- Sunnyvale Climate Action Plan

# ONE BAY AREA

## MTC and ABAG

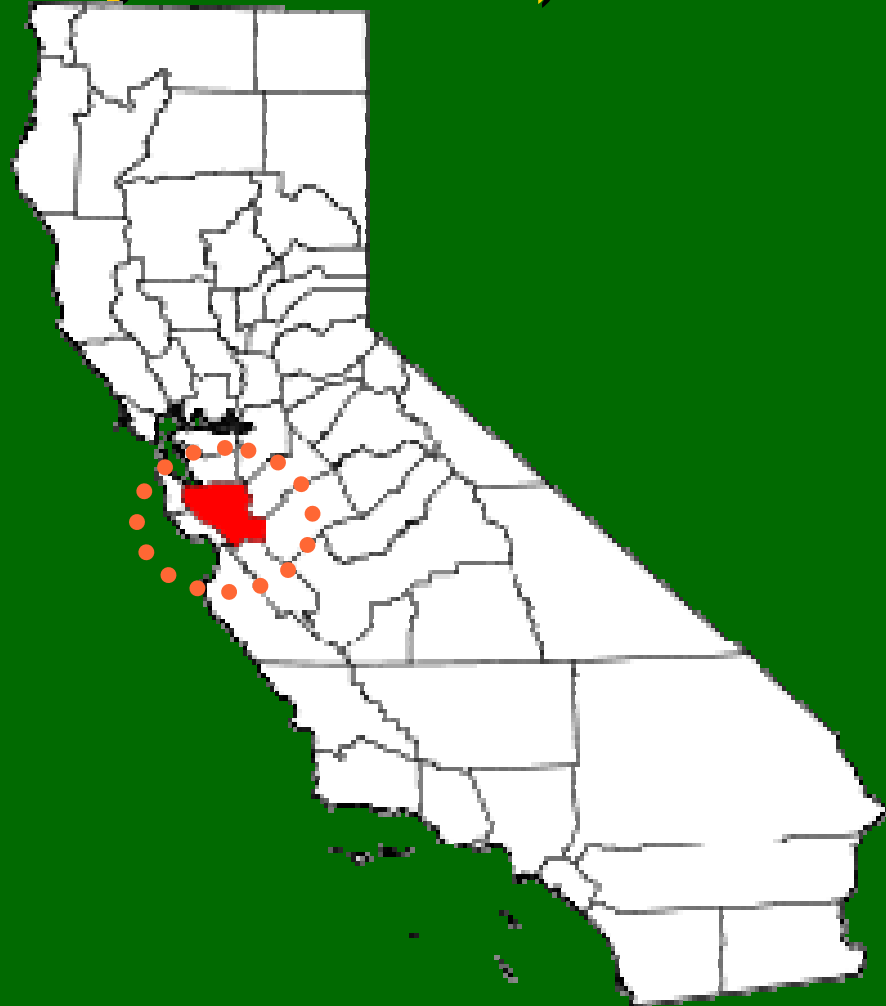
- Integrated land-use and transportation plan
- Achieve GHG reduction targets set by the CARB
- Sustainable Communities Strategy

# BORDERING CITIES

# SANTA CLARA COUNTY (Previously Covered)

- Santa Clara County

- Campbell
- **Cupertino\***
- Gilroy
- **Los Altos \***
- Los Altos Hills
- Los Gatos
- Milpitas
- Monte Sereno
- Morgan Hill
- **Mountain View \***
- Palo Alto
- **San Jose \***
- **Santa Clara \***
- Saratoga
- Sunnyvale



- **WE BORDER 5 CITIES \***

# BORDERING CITIES

- Border Development
- Traffic
- Building Consensus on Regional Issues
- Best Practices
  - Review
  - Monitor
  - Respond
  - Give Notice

# REGIONAL INFRASTRUCTURE

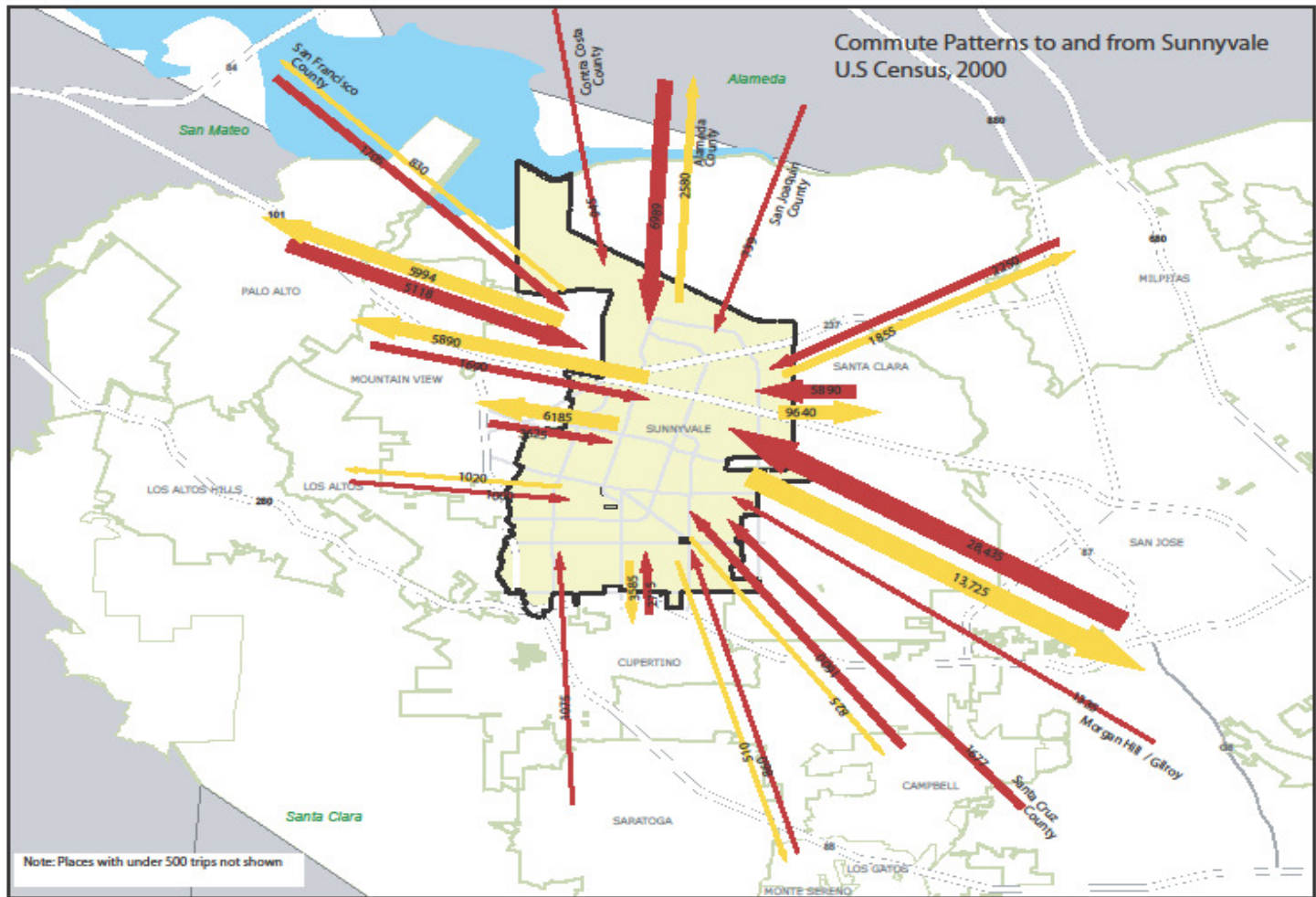
# REGIONAL INFRASTRUCTURE

- Transportation
- Air Quality
- Water (quantity/quality)
- Open Space

# REGIONAL TRAFFIC FRAMEWORK (Previously Covered)

- Transportation Impacts Occur Regardless of Local Growth
- Regional Growth Accounts for Most Traffic Increase Citywide
- Marginal Contribution from City Land Use Plans

# TRAFFIC FLOWS (Previously Covered)



# TRANSPORTATION SYSTEM OPERATORS (Previously Covered)

- CalTrans
- County of Santa Clara
- Caltrain
- VTA
- Private Shuttles
- Outreach Para-transit
- City roads, pathways, trails, etc.

# NEARBY REGIONAL AIRPORTS

- Moffett Federal Air Field
- San Jose Mineta
- Civil Airfields (e.g. Palo Alto)
- NASA, MTC (RAPC), ALUC
- Issues:
  - Quality of Travel
  - Quantity of Travel
  - Community Noise

# SUNNYVALE WATER SUPPLY (Previously Covered)

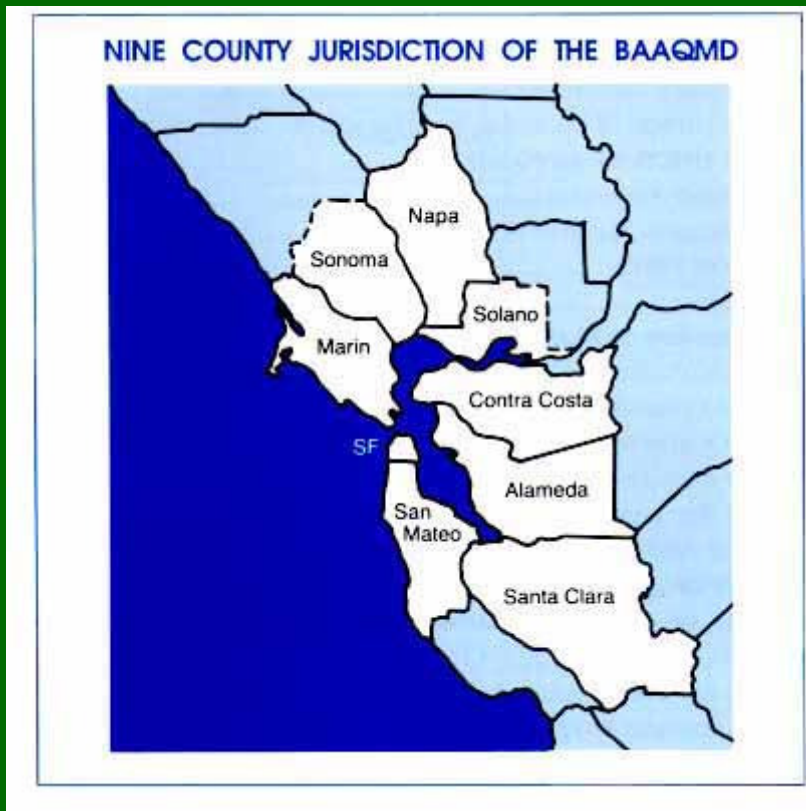
- San Francisco PUC (Hetch Hetchy)
- SCVWD
- Local Wells
- Reclaimed Water

# IMPACT OF WATER SUPPLY (Previously Covered)

- Development dependent on water supply from regional sources
- Water needed for:
  - Residential Development
  - Public Open Space
  - Private Landscaped Areas
  - Technology

# AIR DISTRICT 9 COUNTY JURISDICTION (Previously Covered)

*A healthy breathing environment  
for every Bay Area resident*



## Jurisdictions

1. Alameda
2. Contra Costa
3. Marin
4. San Francisco
5. San Mateo
6. Santa Clara
7. Napa
8. Southwestern Solano; and
9. Southern Sonoma

# AIR DISTRICT (BAAQMD)

- Sets regional air quality standards
- Gives permits for demolition and some uses
- Fines air quality violators
- Provides adopted CEQA Guidelines
- A partner in local development review
- Provides CEQA consultation/guidance

# SCVWD (Previously Covered)

- Clean reliable water
- Flood protection
- Healthy creeks and ecosystems
- BMPs to control what flows to Bay

# SCVWD: REGIONAL WATERSHEDS



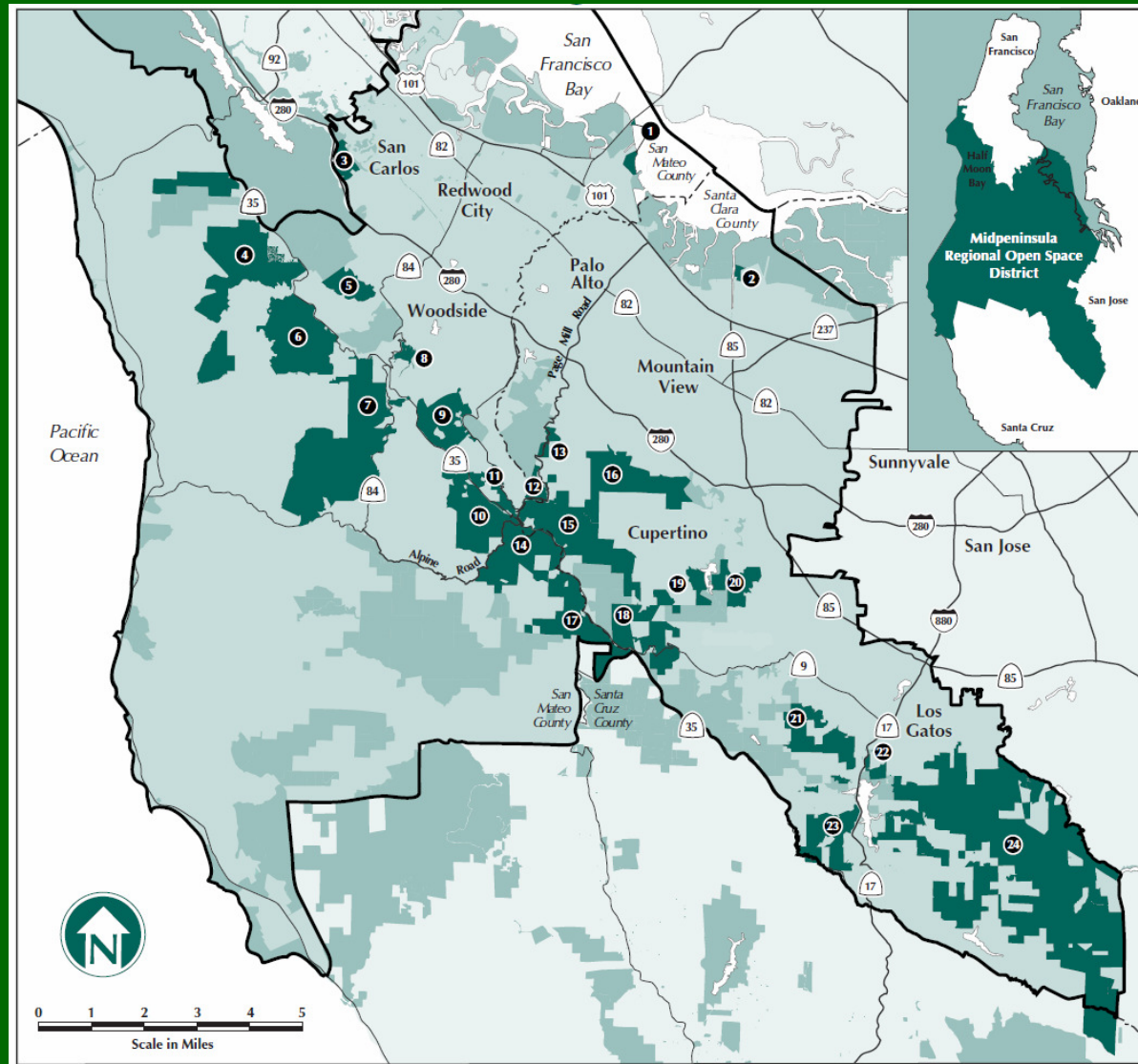
# REGIONAL OPEN SPACE

- Santa Clara County Parks
  - 28 county parks
  - Baylands in Sunnyvale
- Midpeninsula Regional Open Space District
  - 60,000 acres
  - 26 open space preserves
- Sunnyvale and other Cities' parks

# SANTA CLARA COUNTY PARKS



# MIDPENINSULA REGIONAL OPEN SPACE DISTRICT



# REGIONAL HOUSING - RHNA



# ... IF WE DON'T DEVELOP OUR FAIR SHARE

## (Previously Covered)

- Housing costs increase (rents & sale prices)
- Employers face difficulty attracting top talent
- Economic competitiveness of region weakens
- Children of local residents can't afford to live here
- Public/non-profit sector face difficulty in hiring

# ... IF WE AREN'T STRATEGIC ABOUT HOUSING LOCATION

We don't:

- Help contain regional sprawl
- Create compact, infill, walkable communities to help regional GHG reduction
- Create density to support regional transit (chicken and egg)

# ENVIRONMENTAL PROTECTION

# ENVIRONMENTAL PROTECTION

- Federal - NEPA
- State - CEQA
- Other Regional Agencies e.g.
  - SCVWD (regional permit)
  - BAAQMD (guidelines)
  - BCDC (protects the bay shore)
  - VTA

# ADAPTATION

# REGIONAL CLIMATE CHANGE IMPACTS

- Environmental Risks and Hazards
  - Increased high heat days
  - Decreased snowpack (water levels)
  - Sea Level Rise
  - Increased wildfires
  - Effect on ecosystems
- Effects Sensitive Populations (e.g. seniors)
- Effect on City services (Police/Fire)
- Impacts development & investments

# REGIONAL AGENCIES ADAPTATION

- BCDC: Bay Area Conservation and Development Commission
- JPC: Joint Policy Committee
  - ABAG
  - BCDC
  - MTC
  - BAAQMD



# ACTIONS

- Discuss regional policies
- Provide staff with direction on policies
- Select volunteer, if needed
- Volunteer back to staff by Tues Feb 8
- Revised policies sent back to committee
- Committee adopts policies Feb 16