

TRANSPORTATION TRAINING TOPICS

April 6, 2010

Roles of Transportation Providers and Policy Makers

- Context

- Division of Transportation and Traffic
- Other City Operations
- Other Transportation Operators
- CMA
- MTC
- Caltrans, California Public Utilities Commission, the State
- Federal Transportation Agencies - Federal Highway Administration, Federal Transit Administration, etc.

The Who of Transportation (in Sunnyvale)

Department of Public Works

- Division of Transportation and Traffic
 - Planning, Engineering, Operations Services
 - Contract services - Signal maintenance, specialized engineering and planning
 - Traffic signals, roadway design, transportation planning, intergovernmental liaison, public parking, traffic studies, traffic calming, bicycle and pedestrian issues

Transportation Service Partners

Department of Public Works

- **Engineering Services Division**
 - Capital project design and construction
 - Land development review
 - Utility coordination
 - Construction permits
 - Grants administration

Transportation Service Partners

Department of Public Works

- **Field Services Division**
 - Signs/Marking pavement
 - Maintenance
 - Streetlights
 - Sidewalks
 - Street trees

Transportation Service Partners

Department of Public Safety

- **Traffic Unit**
 - Law enforcement
 - Collision reports
- **Crime Prevention Unit**
 - Crossing guards
 - School safety education
 - Bicycle patrol
 - Community outreach

Transportation Service Partners

Department of Community Development

- **Planning Division**

- Long range planning
- Environmental review of land development
- Vehicle and Bicycle parking

Department of Community Services

- Boulevard landscaping
- Bike parking at public facilities

Partners in Transportation Services at the City of Sunnyvale

City Council

- Approves Policy, Programs and Funding

Other Transportation Operators

- Freeways and Highways
 - CalTrans
- Expressways
 - County of Santa Clara
- Transit Service
 - VTA
 - Caltrain
 - Shuttles
 - Outreach Paratransit



Outside Planning and Regulation

- Countywide
 - VTA
 - Countywide planning (including freeways)
 - Congestion Management Agency
 - Funding Administrator
 - Santa Clara County - Expressways
- Regional
 - MTC (Regional planning/policy/funding administration)
 - AB32/SB 375 Agencies
 - Caltrans District 4 (regional office)

Outside Planning and Regulation

- State
 - Caltrans
 - Design standards
 - Funding programs
 - Bridges
 - Federal delegated duties
 - Public Utilities Commission
- Federal

Significant Plans and Programs

- SCC Congestion Management Program
- Comprehensive County Expressway Planning Study
- Valley Transportation Plan
- Regional Transportation Plan - Transportation 2035
- Transportation Improvement Program (TIP)

Regional Planned Projects

- Projects in/near Sunnyvale
 - 33 Roadway Projects
 - Freeway Widening
 - New/Widened Interchange Ramps
 - HOT Lanes
 - Expressway Widening, Grade Separation
 - Transit Projects
 - El Camino Real Bus Rapid Transit
 - Caltrain Electrification
 - Light Rail Operational Enhancements
 - High Speed Rail

Funded City Projects

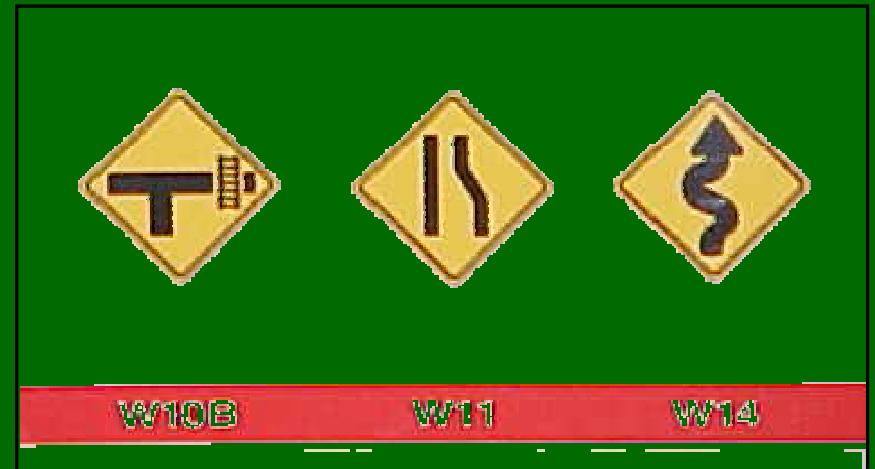
- Infrastructure Replacement/Rehabilitation
- Revenue Dependent
 - Bike-Pedestrian
 - Traffic Calming
 - Energy Efficiency

Unfunded City Projects

- Plans/Programs
 - Bicycle Plan
 - Downtown Specific Plan
 - Moffett Park Specific Plan
 - Bicycle Capital Improvement Program
 - Pedestrian Safety and Opportunities Study
 - Tasman/Fair Oaks Bicycle and Pedestrian Plan
 - Transportation Strategic Program
- Projects
 - Roadway Capacity
 - Bike
 - Pedestrian
 - Streetscape

Roadway Design

- Basic Design Standard:
 - Caltrans
 - California MUTCD
 - Traffic Manual
 - Standard Plans
 - Standard Specifications
- Optional Design Guidance
- Experiments

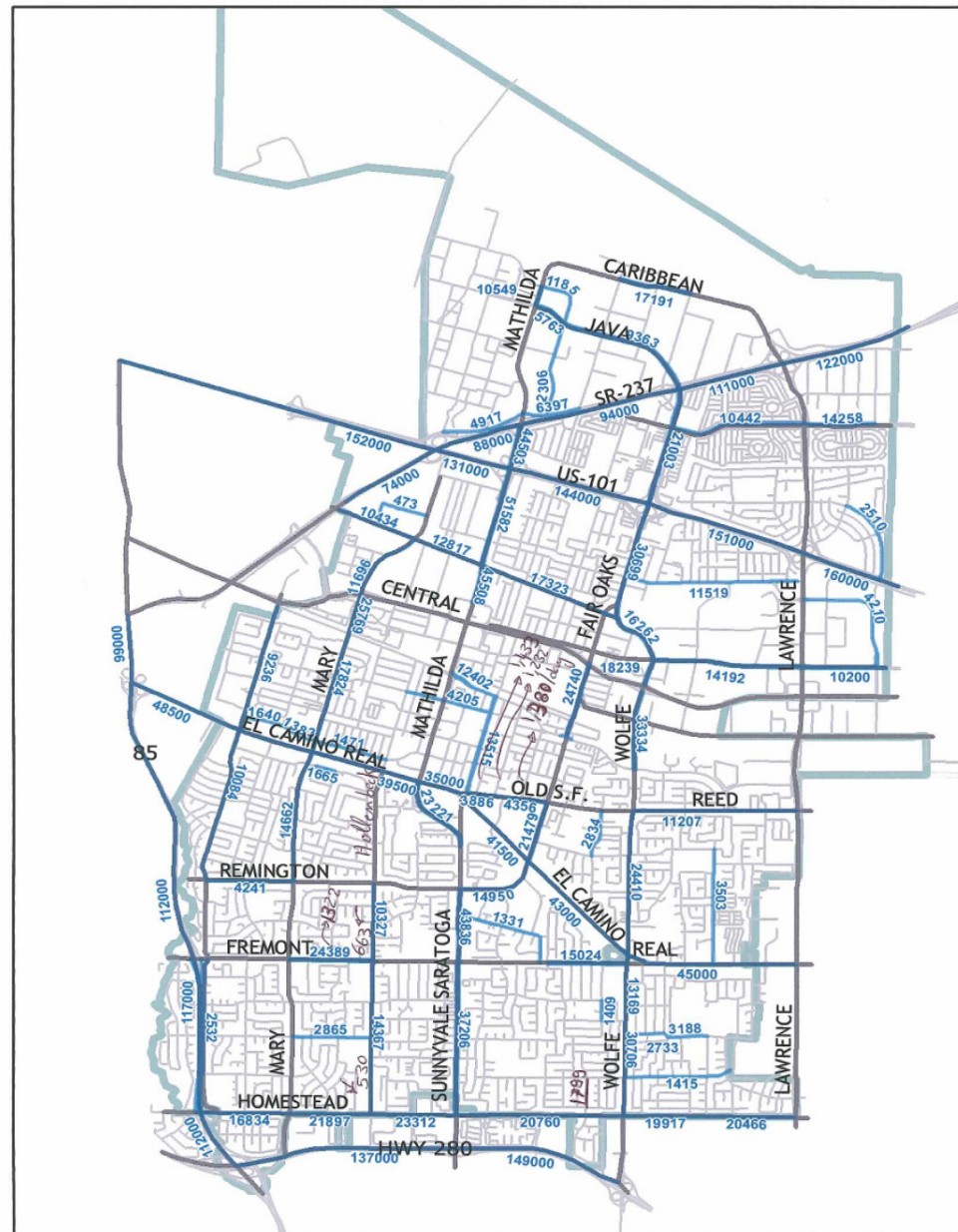


Traffic Operations

- Traffic Control
 - Stop
 - Yield
 - Signalization
- Signs
 - Regulatory
 - Warning
 - Guide and Construction
- Roadway Geometry, Capacity
- Bus stops, Bike lanes, Sidewalks



Weekday (2008) Daily Traffic Volumes



Legend

- Counted Road Segment
- XXXX Average Weekday Daily Traffic Volume



Complete Streets

California Complete Streets Act of 2008

Requires General Plan to plan for a balanced, multimodal transportation network for:

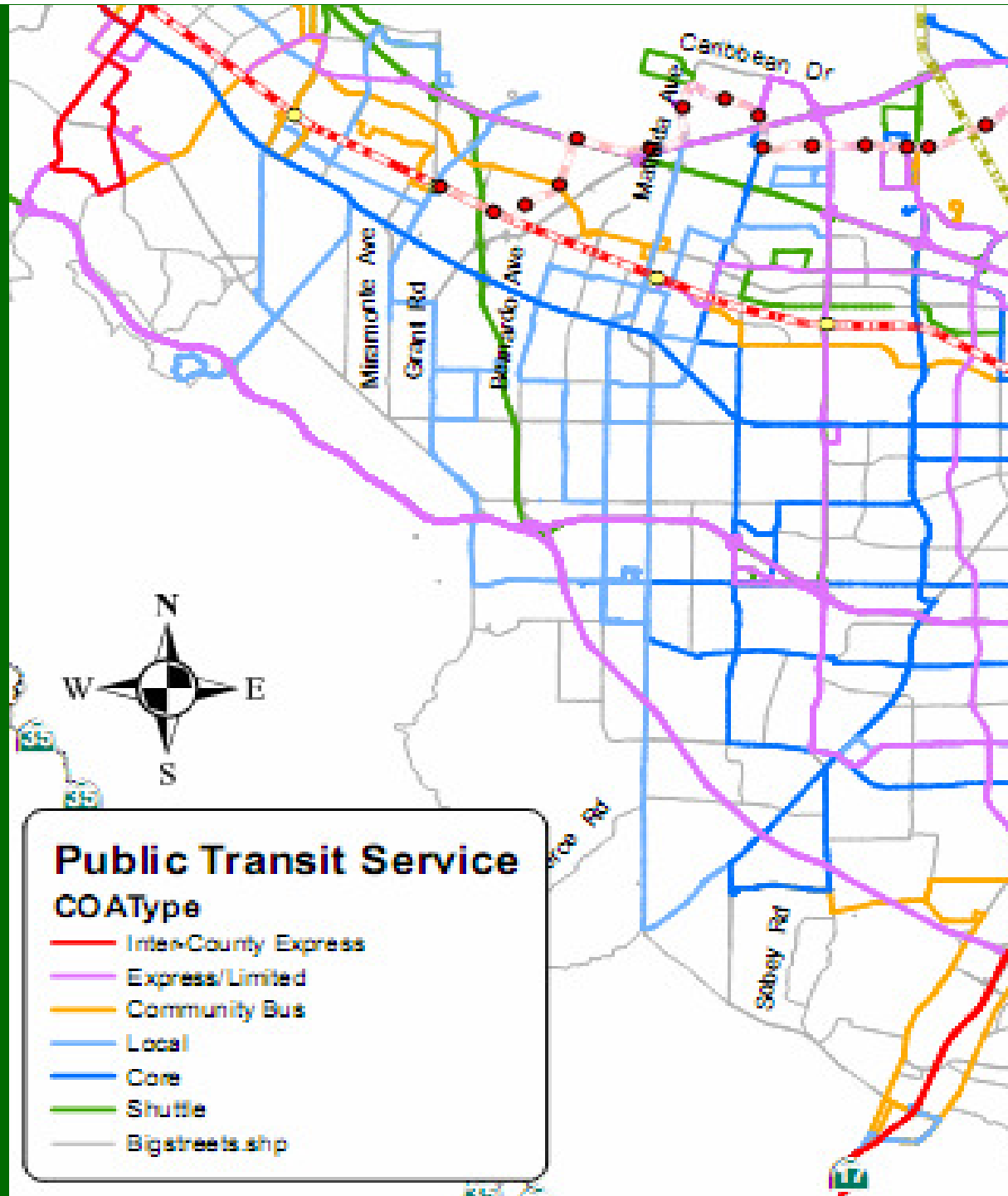
- motorists
- pedestrians
- bicyclists
- children
- persons with disabilities
- seniors
- movers of commercial goods
- users of public transportation

Complete Streets in Sunnyvale

- 1981 Multi-modal policies
- 2009 Street Space Allocation Policies

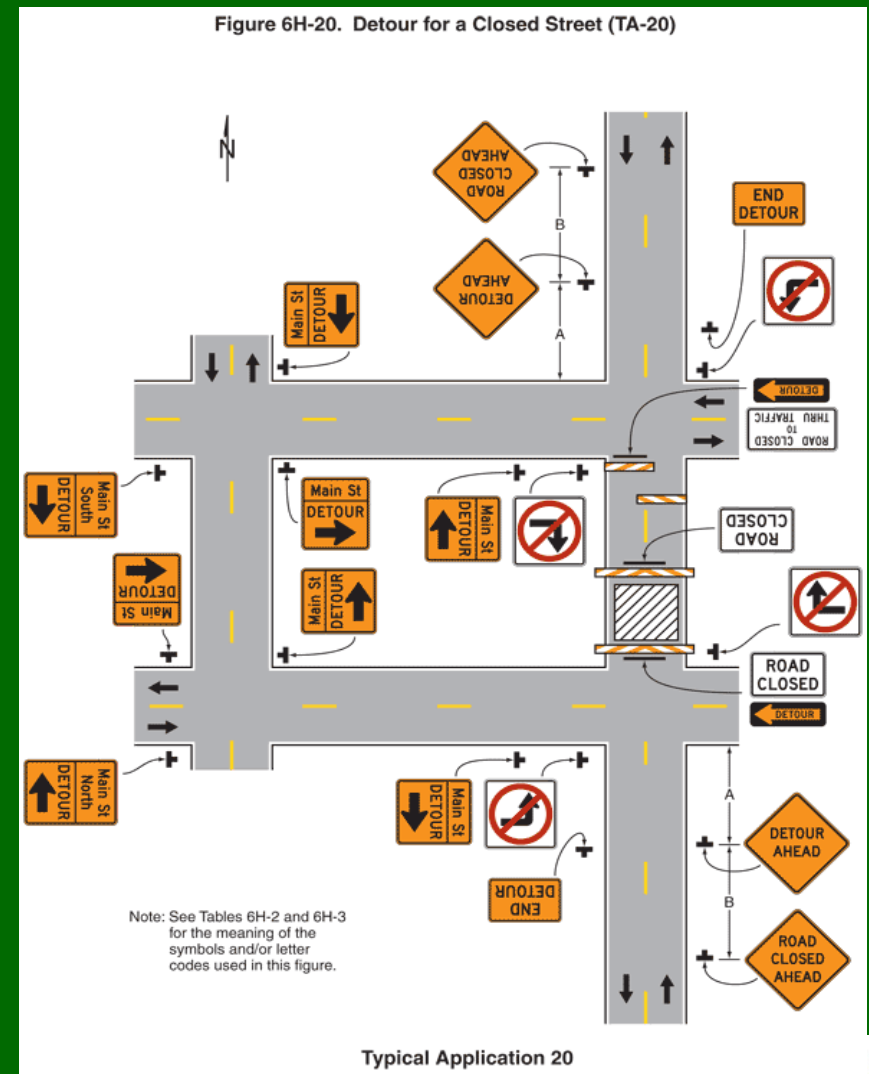
Transit

- Provided by Others
- Bus Transit Service - VTA
- Rail Transit
 - Commuter Rail (Caltrain)
 - Light Rail - VTA
- Accessible Transportation Services - Outreach
- Public Shuttle Services - Caltrain, VTA, ACE



Temporary Traffic Conditions

- California MUTCD
- Augmented by City Standard Operating Procedures and Other Conditions



Alternative Fuel Vehicles

- Policy supports evaluation of clean fuel fleet
- Grant funded City fleet and refuse truck projects
- Electric vehicle charging station at Caltrain station
- Practice is value-based

Transportation Demand Management

“Programs, actions, & regulations to reduce trip making, with emphasis on reducing vehicle trips”

- Maximize efficient use of existing transportation system
- Reduce capacity expansion
- Well-managed TDM programs can
 - offset parking cost
 - capital improvements
 - other solo driving costs

Transportation Demand Management Issues

- Behavior modification
 - can be construed as social engineering
- Mandates
- Direct subsidies
- Restrictions on government TDM
- Labor and cost-intensive to implement and monitor

TDM in Sunnyvale

- Target-Based Condition of Development
- Required for 17 Sites
- Varying Goals
- Annual Reporting
- Ability to Monitor and Enforce
- Residential TDM Policy



Pedestrian Facilities

- Sidewalks
- Paths
- Bike/Ped Bridges
- Crosswalks
- Pedestrian signals



Pedestrian Facilities - Status

- Partially Developed Sidewalk Network
 - None in Some Neighborhoods
 - Big Gaps in Industrial Areas
- 9 ped bridges
 - Including bike/ped
- Neighborhood pathway connections
- 52 Pedestrian Countdown Signals
- Lighted crosswalks



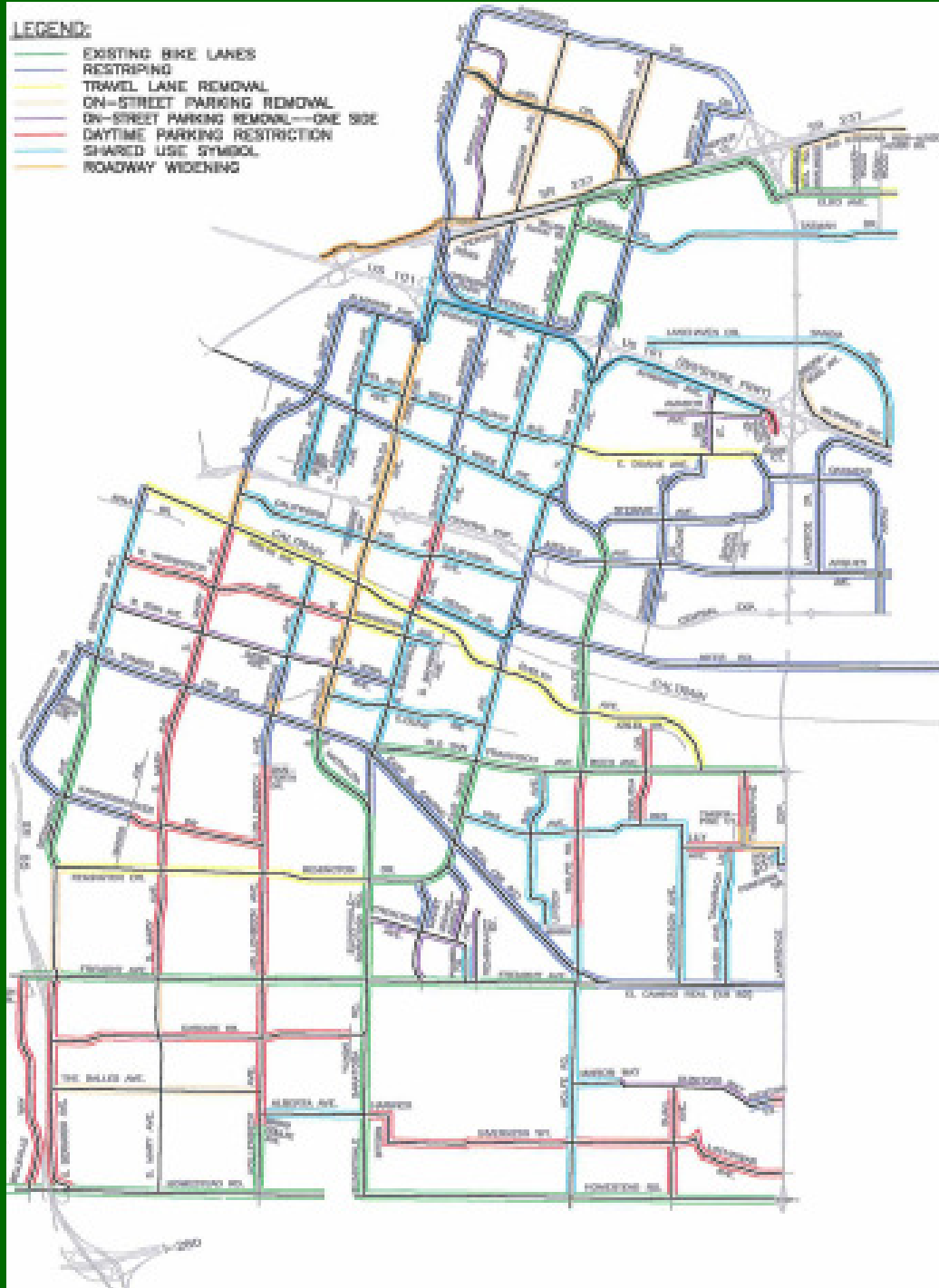
Bicycle Network and Facilities

- **Class I Bike Paths**
 - John W. Christian Greenbelt
 - Calabazas Creek Trail
 - Various Short “Links”
 - Bicycle/Pedestrian Bridges - Six
- **Class II Bike Lanes**
 - Incomplete Network
 - 83 Lane Miles
 - Arterial and Collector Streets
- **Class III Bike Routes**
 - Mathilda
 - Fair Oaks
 - Mary Avenue
- **Shared Use Facilities - Wolfe Rd**
- **Bicycle Parking - public and private**



LEGEND:

- EXISTING BIKE LANES
- RESTRIPING
- TRAVEL LANE REMOVAL
- ON-STREET PARKING REMOVAL
- ON-STREET PARKING REMOVAL—ONE SIDE
- DAYTIME PARKING RESTRICTION
- SHARED USE SYMBOL
- ROADWAY WIDENING



School Traffic

- Source of complaints
- Mode Split
 - ~70% autos (including carpools)
 - ~30% walk, bike, bus
- Low collision rates
- Short peak periods
- Effective Strategies:
 - School-based demand
- City manages with:
 - Law enforcement
 - Engineering
 - Technical assistance



Question and Answer

